

RANKO

KIZAKI

AOKO

MITANI

KATSUYA

UEDA

HIROSHI

YAMAZOE

## **GALERIE BÖHNER**

**Ranko Kizani, Aoko Mitani, Katsuya Ueda, Hiroshi Yamazoe**

**09.01. – 28.02.2021**

Redaktion: Dr. Claus-Peter Böhner Fery, M.A. & Gerold Maier

Satz & Layout: Matthias Zerb

1. Auflage 2021

Alle Rechte vorbehalten

© Wiedergaberechte aller Werkabbildungen bei den Künstlerinnen und Künstlern

## **GALERIE BÖHNER**

G 7, 7

D-68159 Mannheim

Mobil: 00 49 (0) 177 400 6 222

[www.galerie-boehner.de](http://www.galerie-boehner.de)

[www.kunst-spektrum.de](http://www.kunst-spektrum.de)

[info@galerie-boehner.de](mailto:info@galerie-boehner.de)

## VORWORT

Japanische Tradition und frühe, westliche Moderne sind die Kennzeichen der Arbeiten der vier Künstler, die für diesen Katalog ausgewählt wurden. Ranko Kizakis Arbeiten stehen dabei für die jahrhunderte alte Kunst der Kalligraphie, die einst zu den Disziplinen gehörte, welche jeder gebildete Japaner beherrschen musste.

Die folgenden drei Künstler offerieren mit ihren Werken das abwechslungsreiche Spiel von Farben und Formen. Aoko Mitani's verträumte Figuren, Katsuya Uedas hauchzarte Pigmentkompositionen und Hiroshi Yamazoes spätimpressionistische Landschaften zeigen, wie vielfältig das aktuelle Kunstschaffen Japans heute ist.

*Dr. Helmut Orpel,  
Kunsthistoriker*

## FOREWORD

Japanese tradition and early, western modernism are the hallmarks of the works of the four artists selected for this catalogue. Ranko Kizaki's works represent the centuries-old art of calligraphy, which once belonged to the disciplines that every educated Japanese had to master.

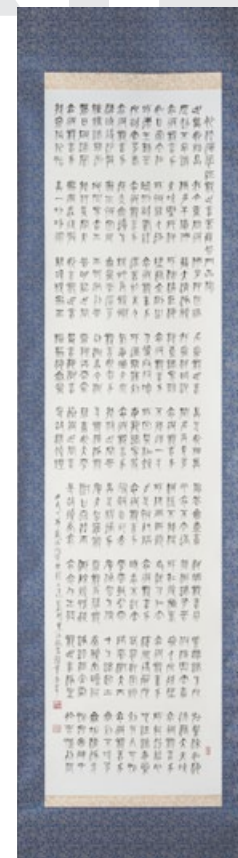
The following three artists offer with their works the varied play of colours and forms. Aoko Mitani's dreamy figures, Katsuya Ueda's wafer-thin pigment compositions and Hiroshi Yamazoe's late impressionistic landscapes show how diverse Japan's contemporary art is today.

*Dr. Helmut Orpel,  
art historian*

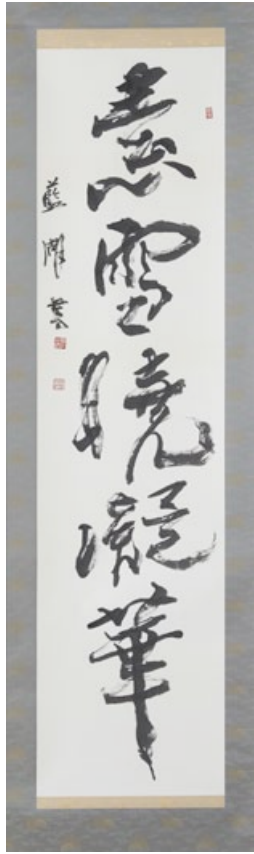
**RANKO KIZAKI**

GENRE: India ink on Japanese paper

- 1939 Born in Tokyo
- 1963 Entered GAKUSHOIN headed by Taiun Yanagida
- 1990 Transferred to TAISHOKAI after death of Master Taiun  
Currently guest teacher
- 1992 Recipient of 34th GAKUSHOIN Exhibition Art Award
- 1995 First solo exhibit (Kyobashi - Kubota Art Gallery)  
First Prize at Guilin International Goodwill Beilin Exhibit
- 1996 Second solo exhibit (Kyobashi - Kubota Art Gallery)  
Commission by Asakusa Temple  
(three scrolls of the Hokke-kyo Buddhist scriptures)
- 1997 Third solo exhibit (also held in 1998 and 1999 - Kubota Art Gallery)



„Kanzeon Bosatsu Fumohon“  
202 x 50 cm



„The snowy landscape at dawn is like an interesting flower blooming around“  
202 x 50 cm

8



„White pear flowers are scattered and flutter in the wind like a snowstorm“  
202 x 50 cm

9

**AOKO MITANI**

TECHNIQUE: Japanese painting

BIRTHPLACE: Kyoto City

**EDUCATION**

1994 Professor of Women's Arts University Graduate School

1987 Professor of Women's Arts University

1952 Joined Shoko-Sha, Suisho Nishiyama and his private school of painting

1949 Graduated from Kyoto Municipal Arts Specialty School

**MEMBERSHIPS**

Nitten (participator)

Honorary professor of Women's Arts University

**SOLO EXHIBITIONS**

1995 Tokyo International Art Museum (Tokyo)

1998 Ginza Matsuya Department Store (Tokyo)

1982 Kyoto Asahi Gallery (Kyoto)

1961 Nihonbashi Mitsukoshi Department Store (Tokyo)

**AWARDS**

1948 – 2014 Exhibited works in Nitten Exhibition

1988 Prime Minister's Nitten Award

1980 Exhibited works in the Contemporary Women's Art Exhibition

1981 Exhibited works in the Contemporary Women's Exhibition

1959 Chuo-Ko New Faces Exhibition

1955 Exhibited works in the Asahi Newspaper New Faces Exhibition



„Spring hill“  
72,7 x 100 cm

12



„Winter cap“  
72,7 x 53 cm

13



„Plateau“  
33,4 x 24,3 cm

14



„With palm trees“  
33,4 x 24,3 cm

15





„Blue dress“  
33,4 x 24,3 cm

16



„Wait for spring“  
33,4 x 24,3 cm

17



„Blue room“  
27,3 x 22 cm

18



„Costume used at a dance“  
40,9 x 31,8 cm

19



„Morning“  
33,4 x 24,3 cm

20



„Evening“  
33,4 x 24,3 cm

21



„Spring“  
33,4 x 24,3 cm

22



„Early summer“  
27,3 x 22 cm

23

**KATSUYA UEDA**

TECHNIQUE: stone pigments on linen paper

1944 Born in Kyoto

1968 Graduated from the Tokyo University of the Art  
Apprenticed himself to Tatsuo Takayama

1970 Completed graduate school at the Tokyo University of the Arts

1981 Entered the Modern Art Selections Exhibition held by the Agency for Cultural Affairs (1985)

Created works for overseas embassies under commission by the Ministry of Foreign Affairs (1992 and 2000)

1982 Awarded an Honorable Mention at the Tokyo Central Museum Japanese Paintings Grand Prize Exhibition

1994 Participated in the Japanese Painting Exhibition at the festival to celebrate 100 years of support for Heian-Jingu

2000 Appointed as professor in the Kyushu Sangyo University Faculty of Fine Arts Graduate School

2001 Appointed as regent for the Japan Fine Arts Exhibition  
Appointed as a management committee member for the Japan Fine Arts Exhibition

2002 Appointed as vice chief director for the Japanese-Style Painters' Association in Kyoto (~2006)

2003 Donated a Japanese-style painting for the Great 1100th Anniversary Festival at Dazaifu Tenmangu Shrine

2005 Served as judge at the Kyoto Exhibition  
Appointed as a managing committee member for the Kyoto Culture Foundation Exhibit Room (~2007)

2012: Created "Gion Festival" for the 100 Selections of the Heart of Kyoto Exhibition (held by Kyoto Prefecture)  
Stored in Kyoto Prefecture

2015: Held exhibit commemorating his retirement accompanying mandatory retirement as a professor in the graduate school at Kyushu Sangyo University Faculty of Fine Arts (University Art Museum)  
Appointed as Honorary Professor  
Appointed as vice representative for the Federation of Asian Artists, Japan Committee

2016: Held the "Bond between Master and Pupil: Tatsuo Takayama and Katsuya Ueda" Exhibition (Narukawa Art Museum)



„The changing time, grass, flower“  
65,2 x 100 cm

26



„History“  
72,7 x 91 cm

27



„Travel morning“  
72,7 x 91 cm

28

UEDA



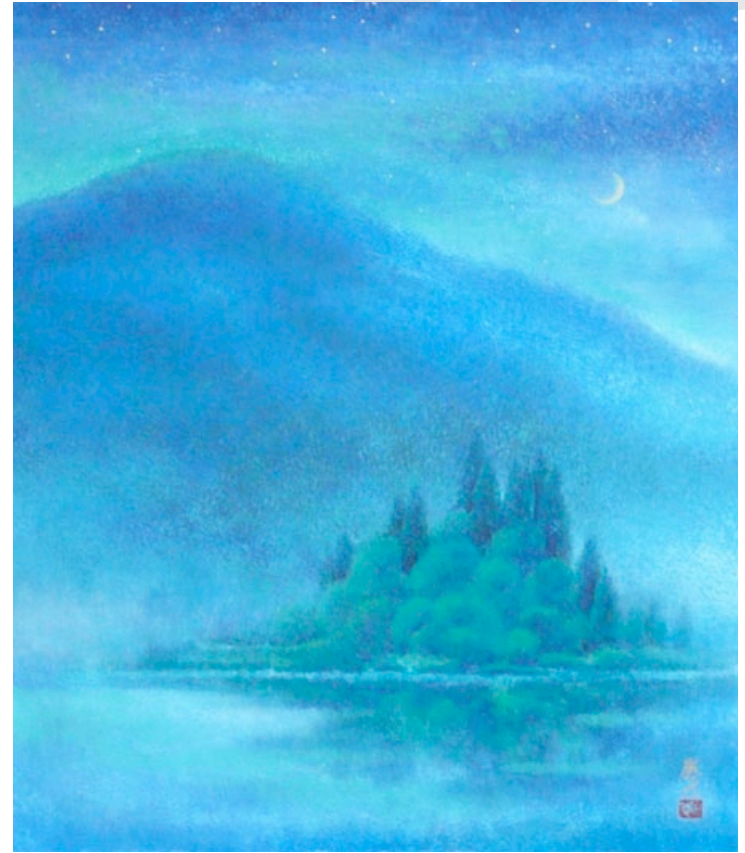
„Wither“  
66,6 x 72,7 cm

29



„Golden autumn“  
60,6 x 72,7 cm

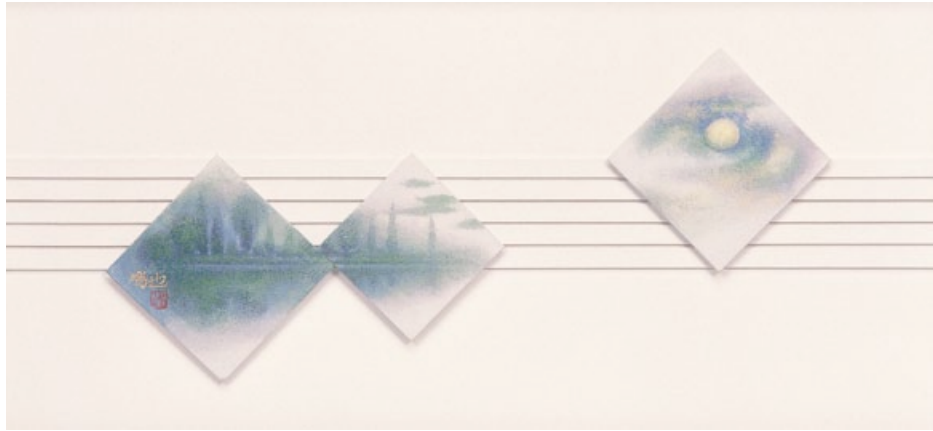
30



„Dawn“  
53 x 45,5 cm

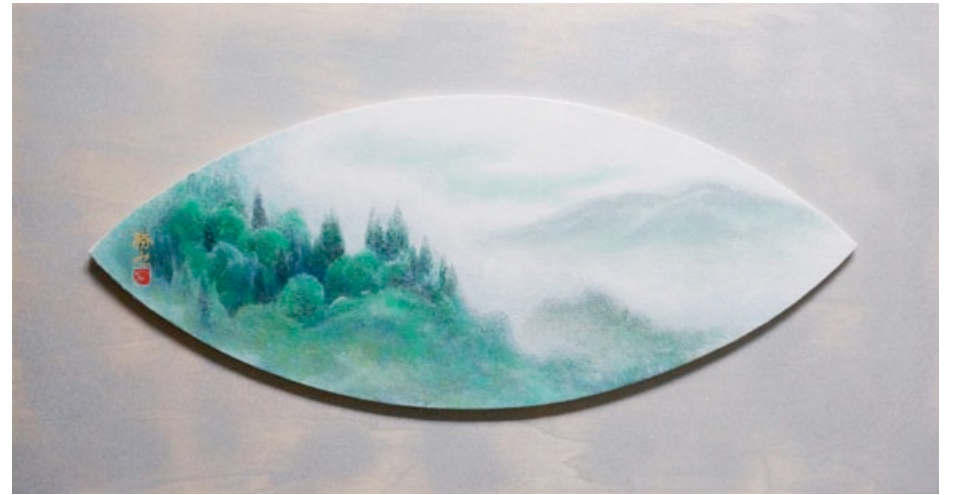
31





„Waterfront“  
35,5 x 53,2 cm

32



„When hazy in the fog“  
16,5 x 40,5 cm

33



„Bright“  
23 x 40 cm

34



„Morning glory“  
34,5 x 17,5 cm

35

## HIROSHI YAMAZOE

GENRE: oil painting

Born in Karuizawa

### EXHIBITIONS

- 2007 Selected artist in the 120th Salon du Printemps
- 2008 Magenta Prize in Le Salon of French Art Association
- 2012 Exhibited at LEXUS Koishikawa, Tokyo
- 2019 Solo Exhibition at Shanghai Ohta Gallery
- 2020 Solo Exhibition at Nishiyama Art Museum

### ART FAIRS

- 2010 Shanghai Art Fair  
Geneva International Art Fair
- 2011 Seoul Art Fair
- 2015 Art International Zurich, Switzerland
- 2016 Affordable art fair Hamburg  
Art International Zurich, Switzerland
- 2017 Art International Zurich, Switzerland
- 2018 Art International Zurich, Switzerland
- 2019 Art International Zurich, Switzerland



„Dawn in Machapuchare No.1“  
45,5 x 53 cm

38



„Dawn in Machapuchare No.2“  
53 x 45,5 cm

39



„Glow in Annapurna No.10“  
31,8 x 40,9 cm

40



„Lake Grassi No.2“  
45,5 x 53 cm

41



„Lake Grassi No.3“  
24,3 x 33,4 cm

42



„Lake Grassi No.5“  
24,3 x 33,4 cm

43



„Lake Moraine No.1“  
45,5 x 37,9 cm

44



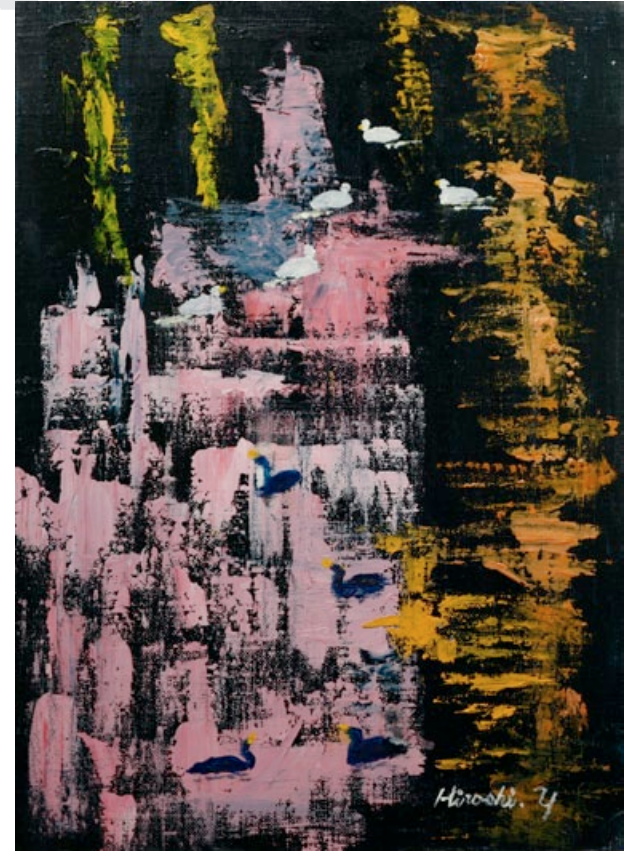
„Lake Moraine No.2“  
37,9 x 45,5 cm

45



„Lake Moraine No.3“  
31,8 x 40,9 cm

46



„Affection No.56“  
33,4 x 24,3 cm

47





„Affection No.57“  
33,4 x 24,3 cm



„Affection No.60“  
33,4 x 24,3 cm





**“Japanese tradition  
and early, western  
modernism are the  
hallmarks of the  
works of the four  
artists selected  
for this catalogue.”**

*Dr. Helmut Orpel,  
art historian*